

43°53'0"N

43°52'30"N

43°52'0"N

43°51'30"N

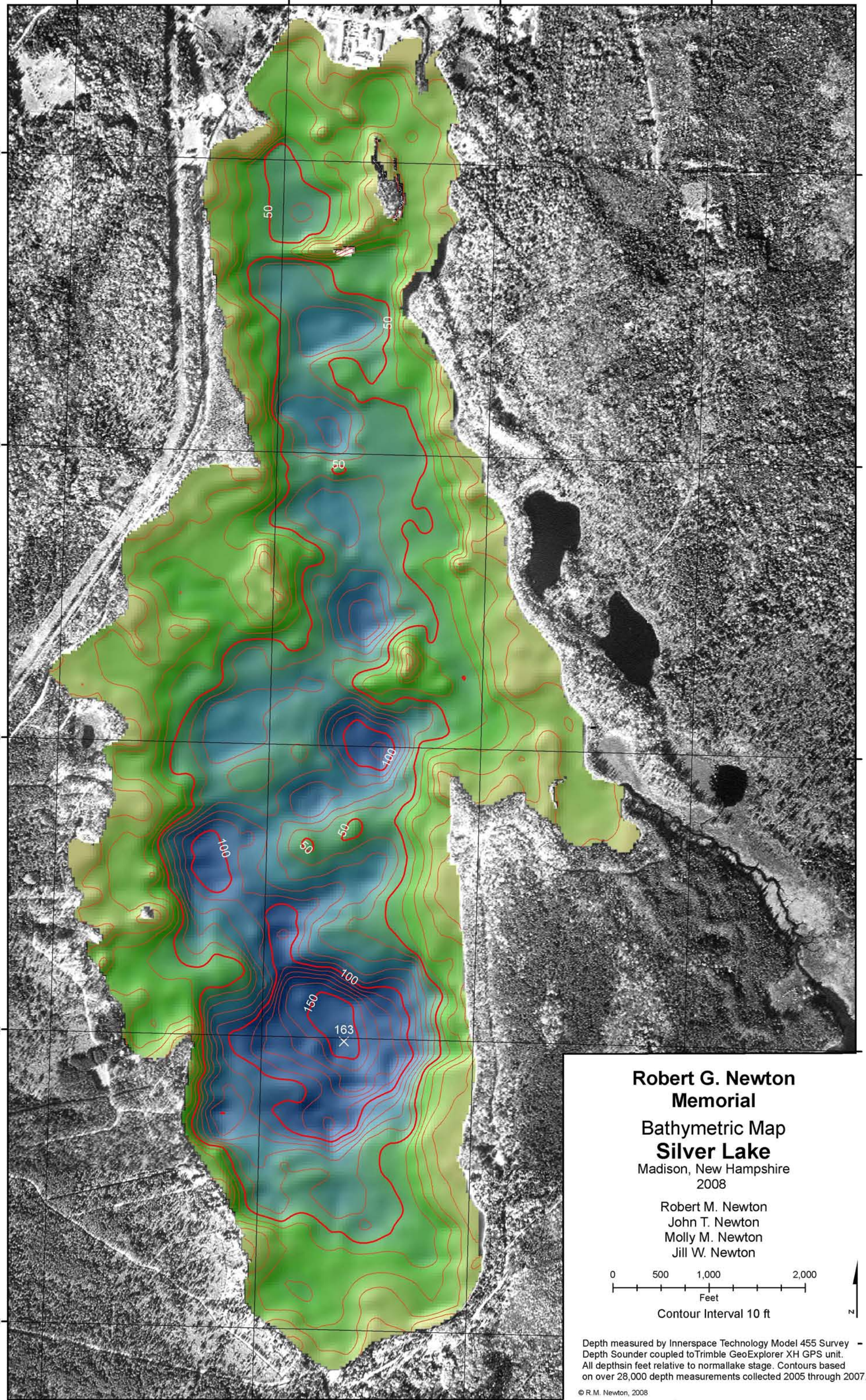
43°51'0"N

71°11'0"W

71°10'30"W

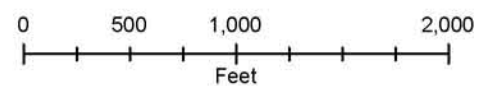
71°10'0"W

71°9'30"W



**Robert G. Newton
Memorial
Bathymetric Map
Silver Lake**
Madison, New Hampshire
2008

Robert M. Newton
John T. Newton
Molly M. Newton
Jill W. Newton



Contour Interval 10 ft

Depth measured by Innerspace Technology Model 455 Survey -
Depth Sounder coupled to Trimble GeoExplorer XH GPS unit.
All depths in feet relative to normal lake stage. Contours based
on over 28,000 depth measurements collected 2005 through 2007.

© R.M. Newton, 2008